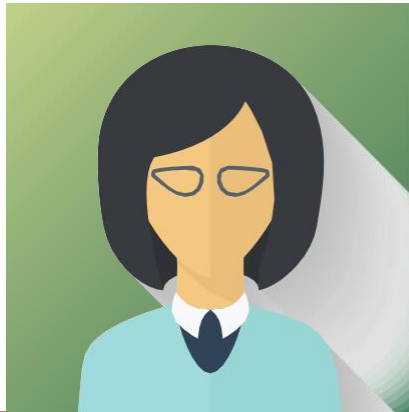




MINNESOTA STATE

Engineering Center of Excellence

ENGINEERING & ENGINEERING TECHNOLOGY EMPLOYERS



MATCH

CANDIDATE TALENTS
TO YOUR CAREER

OPPORTUNITIES

[http://mnceme.mnsu.edu/
careers/engineering-
technology-job-search/](http://mnceme.mnsu.edu/careers/engineering-technology-job-search/)



In Partnership with:

RealTime Talent

EXCHANGE

All organizations are in the business of talent. Hiring the right people is more critical than ever before. However, all employers struggle to find the talent they need.

Traditional recruiting methods often require employers to sort through high volumes of resumes or settle for a less than ideal candidate. For employers of any size, this process can be costly and time-consuming, often without the payoff of an excellent hire.

Engineering and Engineering Technology Careers Job Exchange revolutionizes the recruiting process, connecting you with quality candidates uniquely matched to your role.



HOW IT WORKS

It's intuitive. It's smart. It's highly effective. It is not, however, a typical web-based job board. Our tool is a proven solution that saves businesses time and money. This state-of-the-art technology uses sophisticated blind-matching algorithms to connect candidates and employers based on skills, interests and job requirements. Our data-driven technology sorts and stack-ranks matched candidates based on alignment with job characteristics, not keyword counts. Best of all, getting started is easy.

- Create an employer account
- Answer specific questions about the available position
- Meanwhile, candidates answer correlated questions about their unique skills and interests
- You receive a list of the candidates who best match your needs, and then click to connect

CREATING VALUE FOR YOU AND YOUR TEAM

With each posting, the Engineering and Engineering Technology Careers Job Exchange provides employers with:

- Integrated promotion through social media and email
- Automated candidate pool demographic reports for simplified EEOC reporting
- Automatic posting to other local, regional and national job sites
- A list of top system matches and stack-ranked direct applicants

The Engineering and Engineering Technology Careers Job Exchange is competitively priced, ATS compatible and highly flexible.

- Job seekers never pay
- Full-time, part-time and seasonal job postings cost only \$39
- Internships cost \$19 to post
- Sensitive posting options allow for privacy and confidentiality when necessary

READY TO GET STARTED?

Register today. Create your employer account at <http://mnceme.mnsu.edu/careers/engineering-technology-job-search/>



MINNESOTA STATE
Engineering Center of Excellence